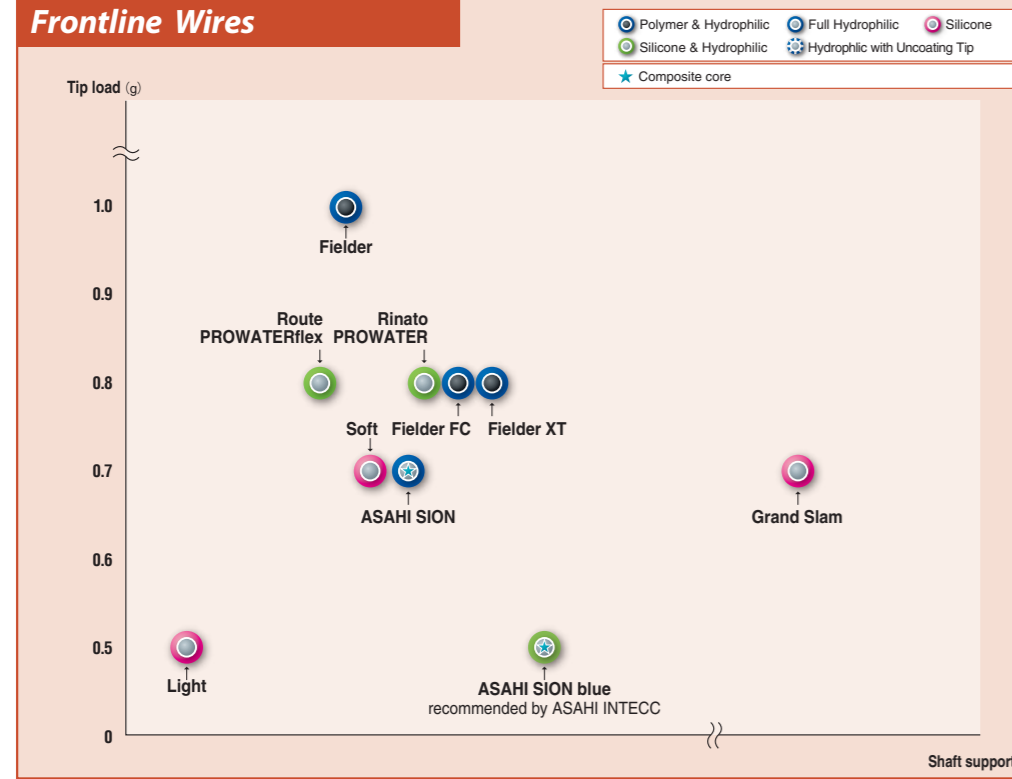
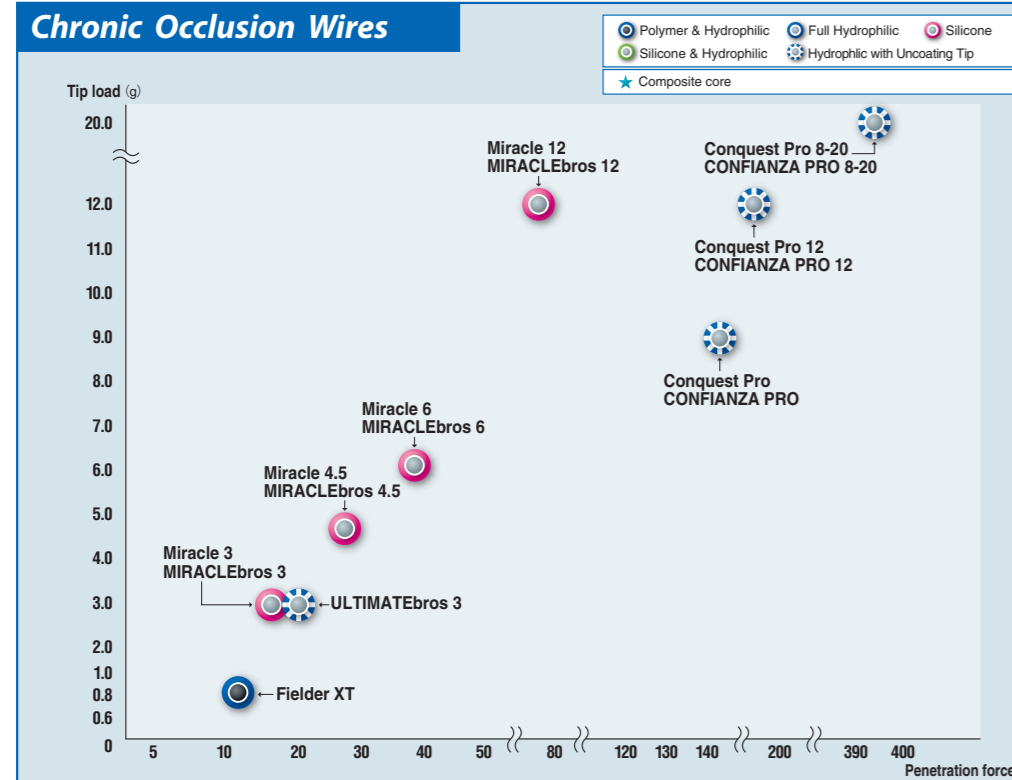


Frontline Wires



Chronic Occlusion Wires



Polymer & Hydrophilic
Enhanced lubricity for better crossability of severe stenoses.

Silicone & Hydrophilic
Combine advantages of both. Silicone coating over the last few centimeters distally, hydrophilic coating over the rest of the coil and shaft.

Silicone
Prevent slippage to gain tactile response for lesion morphology.

Full Hydrophilic
Hydrophilic with Uncoated Tip
Enhance lubricity for easier wire manipulation in lesions.

Ordering Information

Product	Catalog No.	Diameter (mm (inch))	Radiopaque Segment (cm)	Spring Coil Length (cm)	Length (cm)	Tip Shape
ASAHI SION blue	AHW14R004S	0.36 (0.014)	3	20	180	Straight
	AHW14R304S	0.36 (0.014)	3	20	300	Straight
	AHW14R004J	0.36 (0.014)	3	20	180	J
ASAHI SION	AHW14R304J	0.36 (0.014)	3	20	300	J
	AHW14R001S	0.36 (0.014)	3	28	180	Straight
	AHW14R301S	0.36 (0.014)	3	28	300	Straight
Route / PROWATERflex	AHW14R001J	0.36 (0.014)	3	28	180	J
	AHW14R301J	0.36 (0.014)	3	28	300	J
	AGH147000	0.36 (0.014)	3	20	180	Straight
Rinato / PROWATER	AGH147300	0.36 (0.014)	3	20	300	Straight
	AGH147000J	0.36 (0.014)	3	20	180	J
	AGH146000	0.36 (0.014)	3	20	180	Straight
Soft	AGH146300	0.36 (0.014)	3	20	300	Straight
	AGH146000J	0.36 (0.014)	3	20	180	J
	AGH146300J	0.36 (0.014)	3	20	300	J
Light	AG141000	0.36 (0.014)	3	30	180	Straight
	AG141300	0.36 (0.014)	3	30	300	Straight
	AG141000J	0.36 (0.014)	3	30	180	J
Fielder	AG145000	0.36 (0.014)	3	20	180	Straight
	AG145300	0.36 (0.014)	3	20	300	Straight
	AG145000J	0.36 (0.014)	3	20	180	J
Fielder FC	AGP140000	0.36 (0.014)	3	12	180	Straight
	AGP140300	0.36 (0.014)	3	12	300	Straight
	AGP140000J	0.36 (0.014)	3	12	180	J
Fielder XT	AGP140001	0.36 (0.014)	3	11	180	Straight
	AGP140301	0.36 (0.014)	3	11	300	Straight
	AGP140001J	0.36 (0.014)	3	11	180	J
Intermediate / MEDIUM	AGP140002	0.23 / 0.36 (0.009 / 0.014)	16	16	190	Straight
	AGP140302	0.23 / 0.36 (0.009 / 0.014)	16	16	300	Straight
	AG142000	0.36 (0.014)	3	30	180	Straight
Miracle 3 / MIRACLEbros 3	AG142300	0.36 (0.014)	3	30	300	Straight
	AG142000J	0.36 (0.014)	3	30	180	J
	AG14M050	0.36 (0.014)	11	11	180	Straight
ULTIMATEbros 3	AG14M045	0.36 (0.014)	11	11	180	Straight
	AG14M060	0.36 (0.014)	11	11	180	Straight
	AG14M070	0.36 (0.014)	11	11	180	Straight
Conquest / CONFIANZA	AHW14S003S	0.36 (0.014)	11	11	180	Straight
	AHW14S303S	0.36 (0.014)	11	11	300	Straight
	AHW14S003J	0.36 (0.014)	11	11	180	J
Conquest Pro / CONFIANZA PRO	AHW14S303J	0.36 (0.014)	11	11	300	J
	AG143090	0.23 / 0.36 (0.009 / 0.014)	20	20	180	Straight
	AGH143090	0.23 / 0.36 (0.009 / 0.014)	20	20	180	Straight
*Conquest Pro 8-20 / CONFIANZA PRO 8-20	AGH143091	0.23 / 0.36 (0.009 / 0.014)	20	20	180	Straight
	AGH143092	0.20 / 0.36 (0.008 / 0.014)	17	17	180	Straight
	AG141002	0.36 (0.014)	4	4	180	Straight
Grand Slam	AG141302	0.36 (0.014)	4	4	300	Straight
	AG141002J	0.36 (0.014)	4	4	180	J
	AHW10S302S	0.26 (0.010)	3	8	330	Straight
*Extension 150cm	AG149000	0.36 (0.014)	—	—	150	—
*Extension 165cm	AG149001	0.36 (0.014)	—	—	165	—

*Conquest Pro 8-20 / CONFIANZA PRO 8-20 is not CE approved.

*Extension is ASAHI Extension Wire Extension.

Not all products and shapes are available in all markets. Please check availability with your sales representative.

Coated with SLIP-COAT™ coating.

SLIP-COAT™ is a trademark of Angiotech BioCoatings Corp. in the U.S. and/or other countries.



*ASAHI is a trademark or registered trademark of ASAHI INTECC CO., LTD. in Japan and other countries.

Manufactured by:



ASAHI INTECC CO.,LTD.
<http://www.asahi-intecc.com>

Distributed by:

ASAHI

PTCA Guide Wire

Your dreams. Woven together.
ASAHI INTECC

ASAHI

PTCA Guide Wire

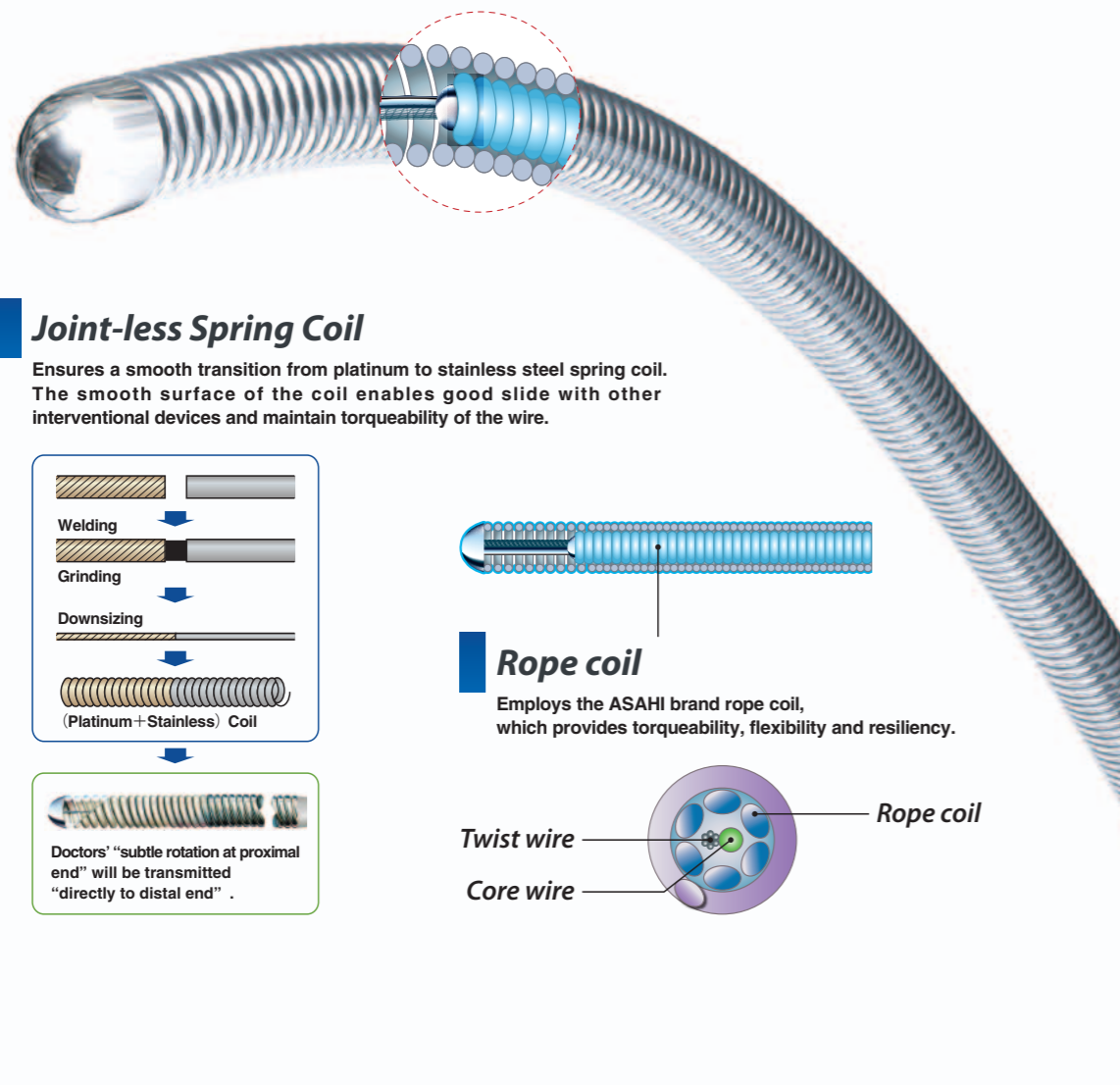
The Right Wire for Any Case

The reliability of the products is highly recognized by its users in the medical profession.

Composite Core

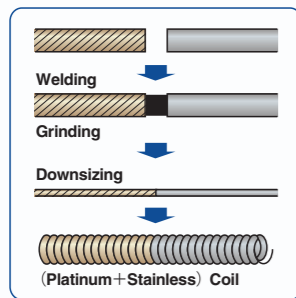
Multiple wire components to enhance durability and torque transmission.

- ASAHI SION
- ASAHI SION blue

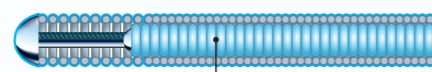


Joint-less Spring Coil

Ensures a smooth transition from platinum to stainless steel spring coil. The smooth surface of the coil enables good slide with other interventional devices and maintain torqueability of the wire.

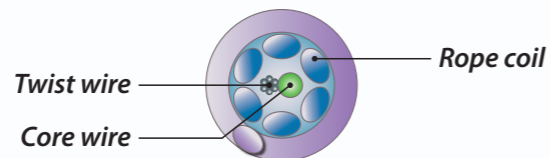


Doctors' "subtle rotation at proximal end" will be transmitted "directly to distal end".



Rope coil

Employs the ASAHI brand rope coil, which provides torqueability, flexibility and resiliency.



Tip Design

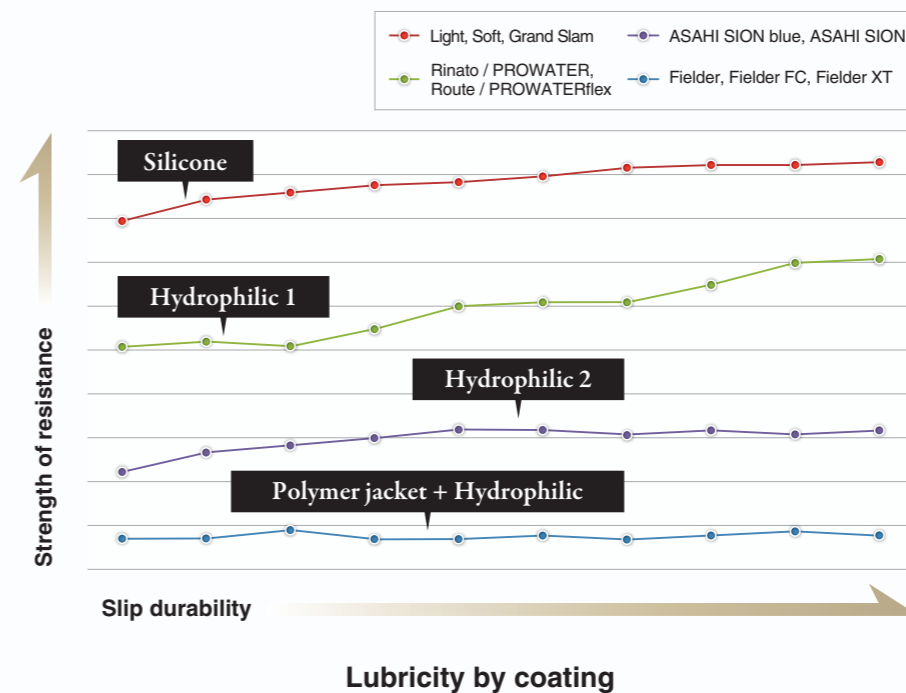
A variety of tip designs to facilitate branch selection or penetration ability. Asahi offers the right wire for any lesion.

One-Piece Core Wire

One-Piece Core Wire supports the entire guidewire from the proximal to the distal end. This design transmits the guidewire torque from one end to the other without loss.

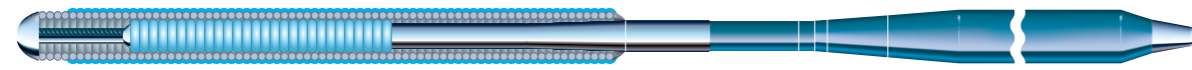
Coatings

A variety of coatings provide either superior lubricity, tactile feedback, or an optimal combination of the two.



Frontline Guidewires / Coil / Composite core

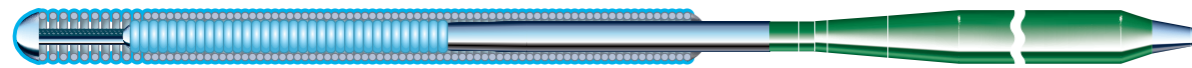
ASAHI SION blue



- Tip load 0.5 g
- Tip radiopacity 3 cm
- SLIP-COAT® coating over the spring coil
- PTFE coating over the shaft

First choice guidewire with proprietary composite core construction for greater tip flexibility and support performance. Silicone coating for 15mm from tip for safer procedures. Easily-discernible shaft color for differentiation from other ASAHI wires.

ASAHI SION

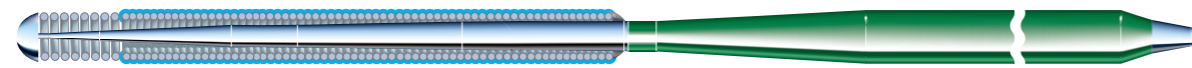


- Tip load 0.7 g
- Tip radiopacity 3 cm
- SLIP-COAT® coating over the spring coil
- PTFE coating over the shaft

First choice guidewire with proprietary composite core construction for excellent tip durability and torque performance in tight anatomy. Flexible shaft and atraumatic tip for stress-free operation.

Frontline Guidewires / Coil

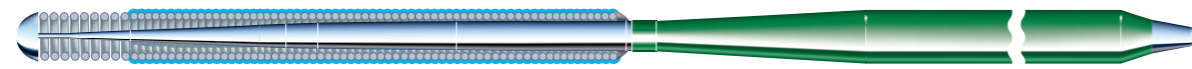
Rinato / PROWATER



- Tip load 0.8 g
- Tip radiopacity 3 cm
- SLIP-COAT® coating over the spring coil
- PTFE coating over the shaft

First choice guidewire with floppy tip and moderate core wire support. Excellent maneuverability and good support for device delivery.

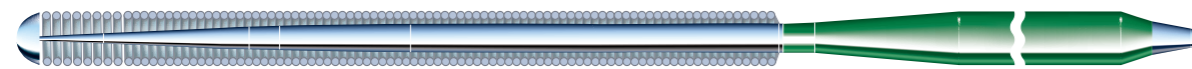
Route / PROWATERflex



- Tip load 0.8 g
- Tip radiopacity 3 cm
- SLIP-COAT® coating over the spring coil
- PTFE coating over the shaft

First choice guidewire featuring a soft tip with good shaping memory and excellent guidewire trackability. Sufficient support for delivery of most interventional devices.

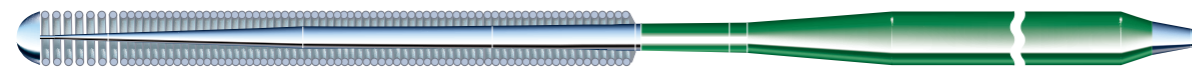
Soft



- Tip load 0.7 g
- Tip radiopacity 3 cm
- PTFE coating over the shaft

Basic frontline guidewire with floppy tip and non hydrophilic coating to ensure optimal tactile feedback.

Light



- Tip load 0.5 g
- Tip radiopacity 3 cm
- PTFE coating over the shaft

Basic frontline guidewire with a flexible core and good torqueability for distal side branch selection.

Frontline Guidewires / Polymer jacket

Fielder



- Tip load 1.0 g
- Tip radiopacity 3 cm
- Polymer sleeve length 22 cm
- SLIP-COAT® coating over the spring coil
- PTFE coating over the shaft

A polymer sleeve guidewire, providing advanced slip performance and trackability.

Fielder FC



- Tip load 0.8 g
- Tip radiopacity 3 cm
- Polymer sleeve length 20 cm
- SLIP-COAT® coating over the spring coil
- PTFE coating over the shaft

Fine control over challenging tortuous vessels and highly stenosed lesions. Polymer sleeve provides advanced slip performance with superior torque and support.

Fielder XT



- Tip load 0.8 g
- Tip radiopacity 16 cm
- Polymer sleeve length 16 cm
- Tip outer diameter 0.23 mm (0.009 inch)
- SLIP-COAT® coating over the spring coil
- PTFE coating over the shaft

Polymer sleeve, providing excellent lubricity and trackability in tortuous vessels. The tapered tip provides extreme precision for the treatment of complex lesions such as sub-total occlusions and long diffused lesions.

Others

Grand Slam



- Tip load 0.7 g
- Tip radiopacity 4 cm
- PTFE coating over the shaft

Stiff wire shaft provides extra support for delivery of interventional devices in extreme cases.

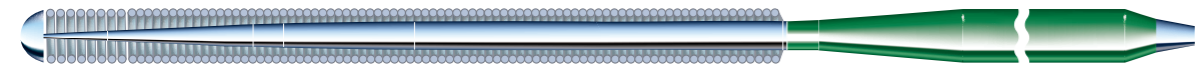
Extension 150 cm / 165 cm



Compatible with all PTCA Guide Wires.
*Extension is 「ASAHI Extension Wire Extension」.

Chronic Occlusion Guidewires

Intermediate / MEDIUM



- Tip load 3.0 g
- Tip radiopacity 3 cm
- PTFE coating over the shaft

First choice wire for chronic occlusion cases.

ULTIMATEbros 3



- Tip load 3.0 g
- Tip radiopacity 11 cm
- SLIP-COAT® coating over the shaft

Long hydrophilic coating maintains high maneuverability, allowing for improved wire manipulation in heavy stenosed lesions. Fine shaping improves vessel selectivity and reduces the risk of false lumen expansion.

Miracle 3 / MIRACLEbros 3



- Tip load 3.0 g
- Tip radiopacity 11 cm
- PTFE coating over the shaft

First choice wire for chronic occlusion cases. The core wire and distal coil are designed to resist great force thus lowering the chances of getting trapped in a lesion.

Miracle 4.5 / MIRACLEbros 4.5



- Tip load 4.5 g
- Tip radiopacity 11 cm
- PTFE coating over the shaft

A step up in tip stiffness from the Miracle 3.

Miracle 6 / MIRACLEbros 6



- Tip load 6.0 g
- Tip radiopacity 11 cm
- PTFE coating over the shaft

A step up in tip stiffness from the Miracle 4.5. The wire has a tip load of 6g and has high driving force against tight lesions.

Miracle 12 / MIRACLEbros 12

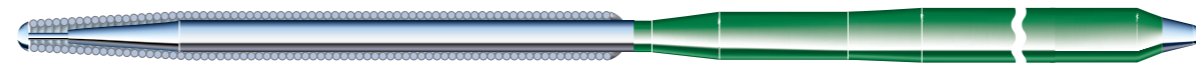


- Tip load 12.0 g
- Tip radiopacity 11 cm
- PTFE coating over the shaft

A tip load of 12g. It is indicated for complex chronic occlusion cases such as thick, hard fibrous caps and calcification.

Chronic Occlusion Guidewires

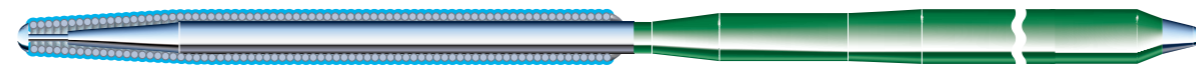
Conquest / CONFIANZA



- Tip load 9.0 g
- Tip radiopacity 20 cm
- Tip outer diameter 0.23 mm (0.009 inch)
- PTFE coating over the shaft

Non hydrophilic coated and tapered to 0.23mm (0.009inch) at the tip. The 9g stiff, tapered tip helps to engage micro channels and to penetrate highly stenosed lesions.

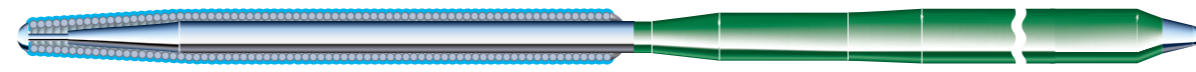
Conquest Pro / CONFIANZA PRO



- Tip load 9.0 g
- Tip radiopacity 20 cm
- Tip outer diameter 0.23 mm (0.009 inch)
- SLIP-COAT® coating over the spring coil
- PTFE coating over the shaft

Similar structure and tip stiffness as Conquest with SLIP-COAT® coating for lubricity. The distal tip is not coated to allow it to catch on the entry point of the lesions.

Conquest Pro 12 / CONFIANZA PRO 12



- Tip load 12.0 g
- Tip radiopacity 20 cm
- Tip outer diameter 0.23 mm (0.009 inch)
- SLIP-COAT® coating over the spring coil
- PTFE coating over the shaft

A tapered tip with 12g tip load. For penetration of calcification and proximal or distal thick, fibrous caps.

Conquest Pro 8-20 / CONFIANZA PRO 8-20



- Tip load 20.0 g
- Tip radiopacity 17 cm
- Tip outer diameter 0.20 mm (0.008 inch)
- SLIP-COAT® coating over the spring coil
- PTFE coating over the shaft

Designed for crossing complex lesions with heavy calcifications and tough fibrous tissues. The wire has a tip load of 20g and is tapered to 0.20mm (0.008inch). It is the finest and stiffest guidewire in the current Asahi series.

Guidewires for Externalization

ASAHI RG3

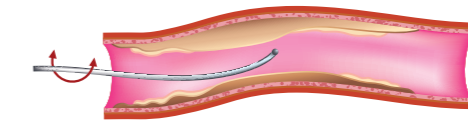


- Tip load 3.0 g
- Tip radiopacity 3 cm
- SLIP-COAT® coating over the shaft
- Shaft diameter 0.26 mm (0.010 inch)
- Guide wire length 330 cm

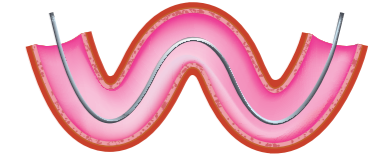
For guidewire externalization only . Optimal wire strength, hydrophilic coating and 0.26 mm (0.010 inch) shaft provide superior inside-catheter pushability. With the inner wall damage possibility reduced in tortuous vessels as well, the risk of complication is minimized.

Recommended Use

Frontline Cases

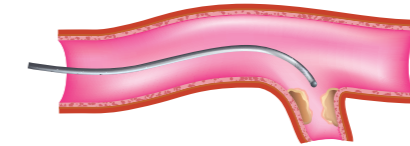


FRONTLINE CASES
ASAHI SION, ASAHI SION blue,
Route / PROWATERflex,
Rinato / PROWATER, Soft, Light



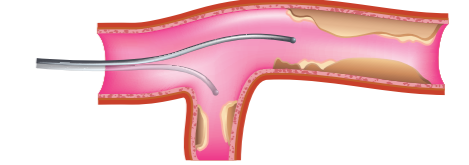
TORTUOUS ANATOMY
ASAHI SION, ASAHI SION blue,
Route / PROWATERflex, Fielder,
Fielder FC, Fielder XT

Side branch



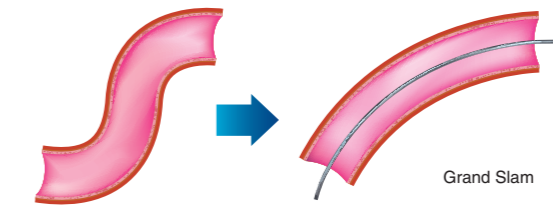
ASAHI SION, ASAHI SION blue,
Route / PROWATERflex,
Rinato / PROWATER,
Fielder, Fielder FC, Fielder XT

Multiple Lesion

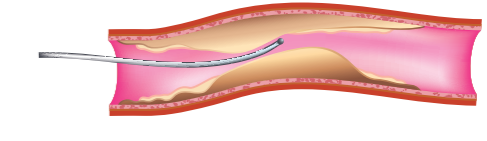


ASAHI SION, ASAHI SION blue

Extra Support Cases

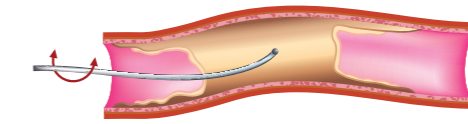


Grand Slam

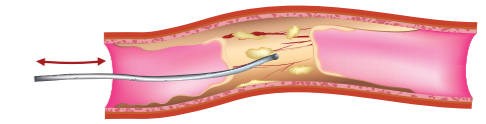


ASAHI SION, Fielder, Fielder FC, Fielder XT

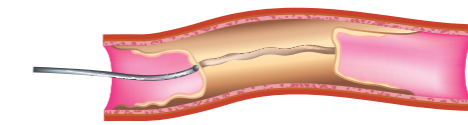
Chronic Occlusion Cases



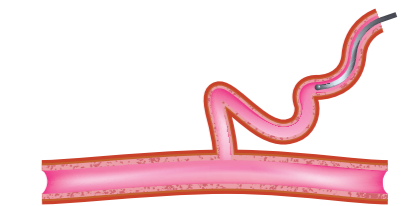
CONTROLLED DRILL
ULTIMATEbros 3
Miracle 3 / MIRACLEbros 3,
Miracle 4.5 / MIRACLEbros 4.5,
Miracle 6 / MIRACLEbros 6,
Miracle 12 / MIRACLEbros 12,
Intermediate / MEDIUM



PENETRATION TECHNIQUE
Conquest / CONFIANZA,
Conquest Pro / CONFIANZA PRO,
Conquest Pro 12 / CONFIANZA PRO 12,
Conquest Pro 8-20 / CONFIANZA PRO 8-20,
Miracle 12 / MIRACLEbros 12



SLIDING TECHNIQUE
Fielder FC, Fielder XT



RETROGRADE APPROACH
ASAHI SION, Fielder FC, Fielder XT